



## Analysis of Faculty Satisfaction Survey

Deanship of Quality Assurance, Institutional Effectiveness and Accreditation

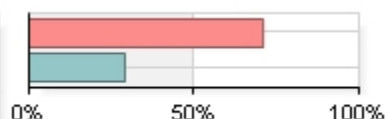
### University Level

Academic Year 2016-2017

Raters	FacultyMembers
Responded	375
Invited	614
Response Ratio	61.07%

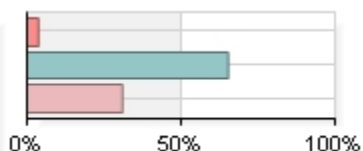
### Gender

Male	266	70.93%
Female	109	29.07%
Total	375	



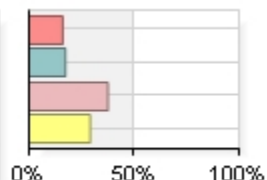
### Nationality

UAE	14	3.73%
Arab	245	65.33%
Non-Arab	116	30.93%
Total	375	



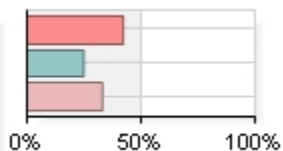
### Academic Rank

Professor	60	16.00%
Associate Professor	65	17.33%
Assistant Professor	141	37.60%
Lecturer	109	29.07%
Total	375	



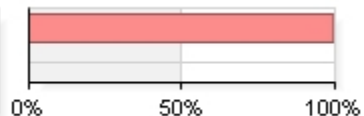
### Years of employment at UoS

1-3 years	158	42.13%
4-8 years	93	24.80%
More than 8 years	124	33.07%
Total	375	



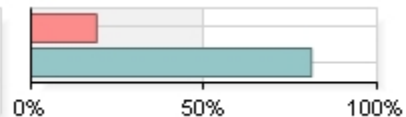
## Contract Type

Full-Time	373	99.47%
Part-Time	2	0.53%
Total	375	



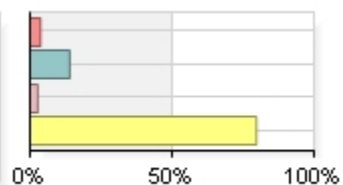
## Are you currently in an administrative position (e.g. Dean, Chair, etc.)

1 Yes	71	18.93%
2 No	304	81.07%
Total	375	



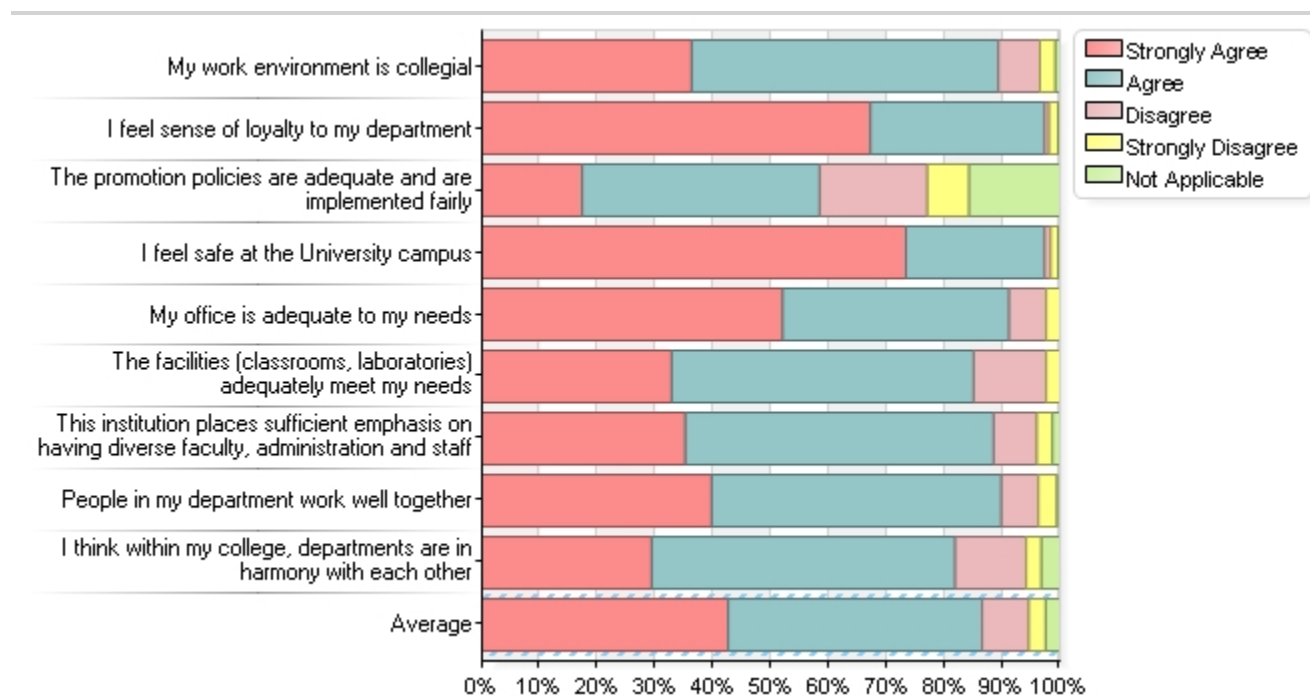
## Please specify

Dean	11	3.65%
Chairperson	42	13.95%
Director	8	2.66%
Others	240	79.73%
Total	301	



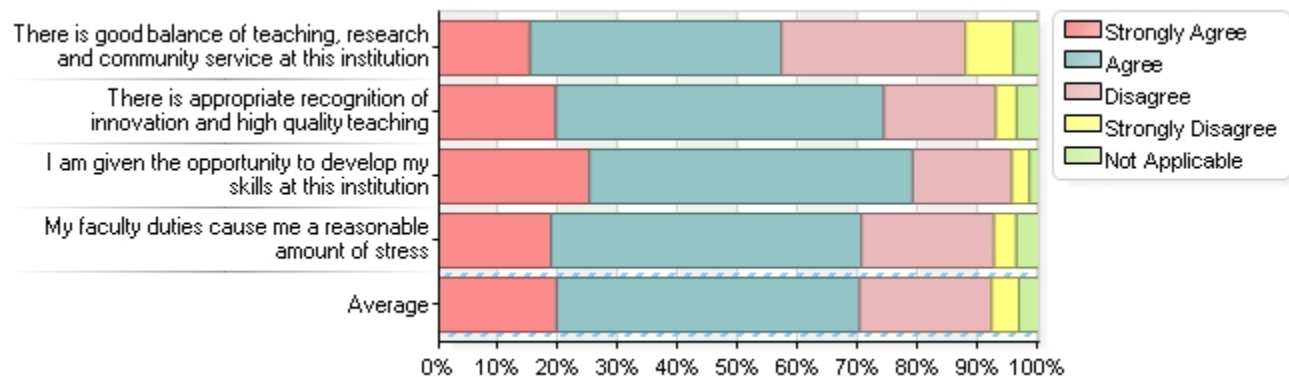
## WORK ENVIRONMENT

Question	Strongly Agree	Agree	Disagree	Strongly Disagree	Not Applicable
My work environment is collegial	36.27%	53.07%	7.20%	2.67%	0.80%
I feel sense of loyalty to my department	67.20%	30.13%	0.80%	1.60%	0.27%
The promotion policies are adequate and are implemented fairly	17.33%	41.07%	18.67%	7.20%	15.73%
I feel safe at the University campus	73.33%	24.00%	1.07%	1.33%	0.27%
My office is adequate to my needs	52.00%	39.20%	6.40%	2.40%	0.00%
The facilities (classrooms, laboratories) adequately meet my needs	32.80%	52.27%	12.53%	2.40%	0.00%
This institution places sufficient emphasis on having diverse faculty, administration and staff	35.20%	53.33%	7.47%	2.67%	1.33%
People in my department work well together	39.73%	50.13%	6.40%	3.20%	0.53%
I think within my college, departments are in harmony with each other	29.33%	52.53%	12.27%	2.67%	3.20%



## TEACHING AND SCHOLARSHIP

Question	Strongly Agree	Agree	Disagree	Strongly Disagree	Not Applicable
There is good balance of teaching, research and community service at this institution	15.20%	41.87%	30.67%	8.00%	4.27%
There is appropriate recognition of innovation and high quality teaching	19.47%	54.67%	18.67%	3.47%	3.73%
I am given the opportunity to develop my skills at this institution	25.07%	53.87%	16.53%	2.93%	1.60%
My faculty duties cause me a reasonable amount of stress	18.67%	51.73%	22.13%	3.73%	3.73%



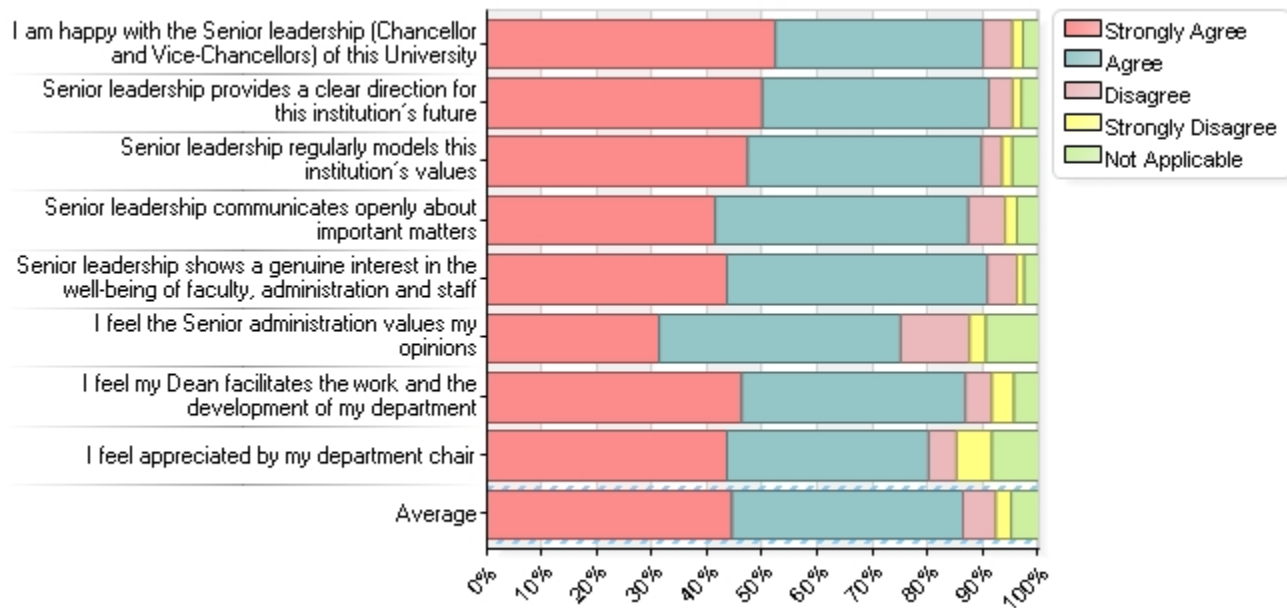
## ACADEMIC AND ADMINISTRATIVE SERVICES

Question	Strongly Agree	Agree	Disagree	Strongly Disagree	Not Applicable
I am satisfied with the services of the Human Resources Department	26.93%	55.73%	10.13%	5.60%	1.60%
I am satisfied with the services of the Financial Department	26.40%	55.47%	12.00%	3.20%	2.93%
I am satisfied with the services of the Purchasing department	16.80%	39.20%	18.93%	6.13%	18.93%
I am satisfied with the services of the admission department	21.33%	52.53%	4.53%	1.33%	20.27%
I am satisfied with the services of the registration department	21.60%	52.53%	9.87%	2.93%	13.07%
I am satisfied with the health services	22.13%	60.80%	10.40%	2.67%	4.00%
I am satisfied with the library services	46.67%	48.00%	1.87%	0.80%	2.67%
I am satisfied with the laboratory services	20.00%	47.20%	4.00%	0.53%	28.27%
I am satisfied with the IT services	30.40%	58.67%	8.53%	1.60%	0.80%
I am satisfied with the Physical plant services	29.60%	54.93%	7.20%	4.27%	4.00%
I am satisfied with the services of the Deanship of Quality Assurance, Institutional Effectiveness and Accreditation	33.33%	48.00%	10.67%	2.40%	5.60%
I am satisfied with the sports facilities	33.07%	46.40%	8.27%	2.13%	10.13%
I am satisfied with the food services on campus	13.33%	44.27%	21.87%	5.87%	14.67%
Parking lots are enough, well lighted and safe	16.27%	39.47%	21.33%	18.13%	4.80%
The university campus is spacious and beautiful	71.73%	26.13%	1.33%	0.53%	0.27%



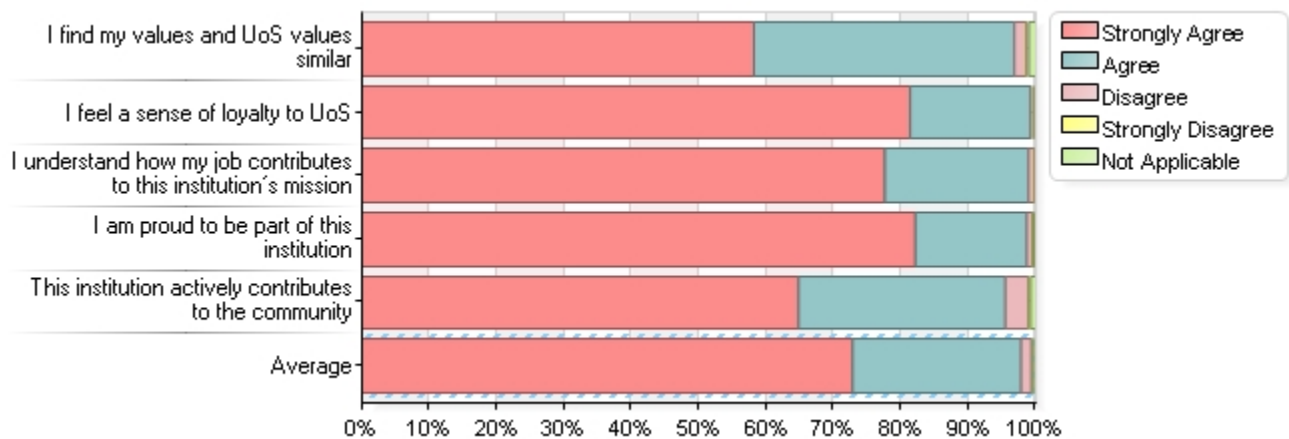
## ADMINISTRATION AND LEADERSHIP

Question	Strongly Agree	Agree	Disagree	Strongly Disagree	Not Applicable
I am happy with the Senior leadership (Chancellor and Vice-Chancellors) of this University	52.27%	37.60%	5.33%	1.87%	2.93%
Senior leadership provides a clear direction for this institution's future	49.87%	41.07%	4.27%	1.60%	3.20%
Senior leadership regularly models this institution's values	47.20%	42.40%	3.73%	1.87%	4.80%
Senior leadership communicates openly about important matters	41.33%	45.87%	6.67%	2.13%	4.00%
Senior leadership shows a genuine interest in the well-being of faculty, administration and staff	43.47%	47.20%	5.33%	1.33%	2.67%
I feel the Senior administration values my opinions	31.20%	43.73%	12.53%	2.93%	9.60%
I feel my Dean facilitates the work and the development of my department	46.13%	40.53%	4.80%	4.00%	4.53%
I feel appreciated by my department chair	43.47%	36.53%	5.07%	6.40%	8.53%



## ENGAGEMENT & PRIDE

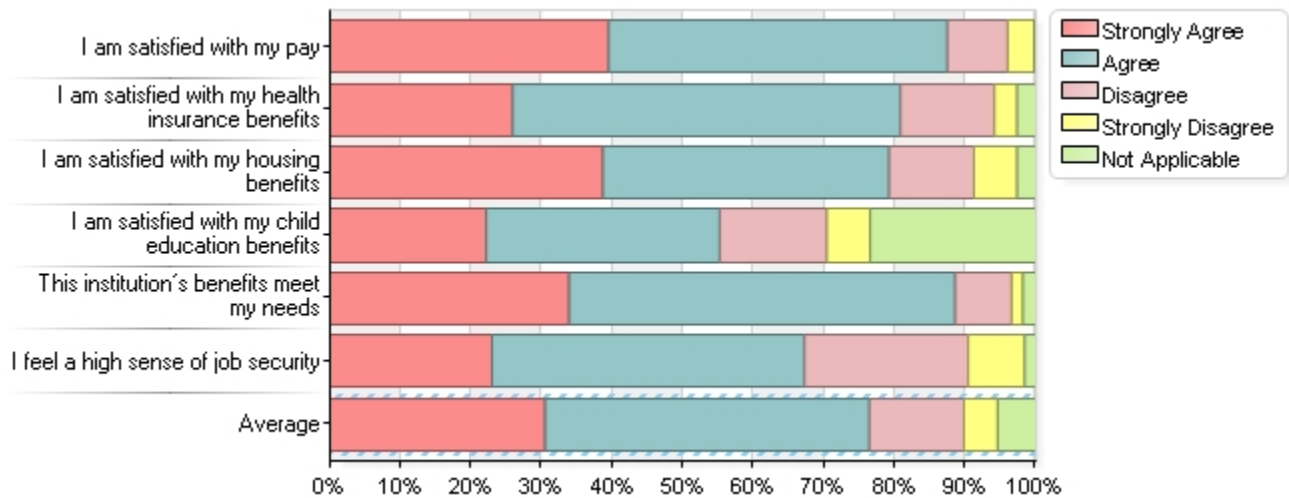
Question	Strongly Agree	Agree	Disagree	Strongly Disagree	Not Applicable
I find my values and UoS values similar	58.13%	38.67%	1.87%	0.27%	1.07%
I feel a sense of loyalty to UoS	81.33%	17.87%	0.53%	0.27%	0.00%
I understand how my job contributes to this institution's mission	77.60%	21.33%	0.80%	0.27%	0.00%
I am proud to be part of this institution	82.13%	16.53%	0.80%	0.27%	0.27%
This institution actively contributes to the community	64.80%	30.67%	3.47%	0.27%	0.80%





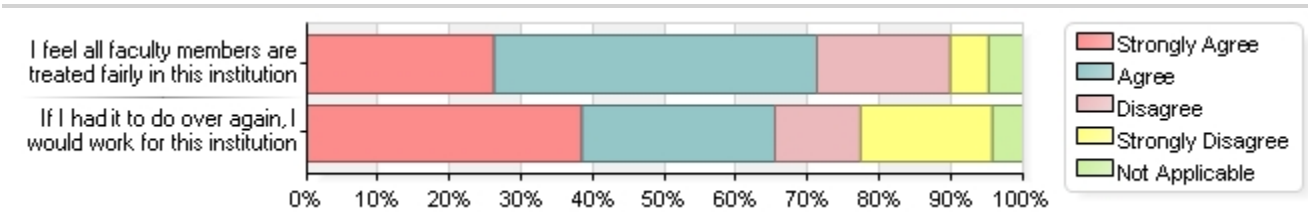
## COMPENSATION & BENEFITS

Question	Strongly Agree	Agree	Disagree	Strongly Disagree	Not Applicable
I am satisfied with my pay	39.47%	48.00%	8.53%	3.73%	0.27%
I am satisfied with my health insurance benefits	25.87%	54.93%	13.33%	3.20%	2.67%
I am satisfied with my housing benefits	38.67%	40.53%	12.00%	6.13%	2.67%
I am satisfied with my child education benefits	22.13%	33.07%	15.20%	6.13%	23.47%
This institution's benefits meet my needs	33.87%	54.67%	8.00%	1.60%	1.87%
I feel a high sense of job security	22.93%	44.27%	23.20%	8.00%	1.60%



# GENERAL

Question	Strongly Agree	Agree	Disagree	Strongly Disagree	Not Applicable
I feel all faculty members are treated fairly in this institution	26.13%	45.07%	18.67%	5.33%	4.80%
If I had it to do over again, I would work for this institution	38.40%	26.93%	12.00%	18.40%	4.27%



# OVERALL

Question	Strongly Agree	Agree	Disagree	Strongly Disagree	Not Applicable
Overall, I am satisfied with the University of Sharjah	58.13%	39.20%	1.87%	0.53%	0.27%

